

## WEATHER SHELTER (Stevenson Screen) No. 170T-P - large size -

### General description

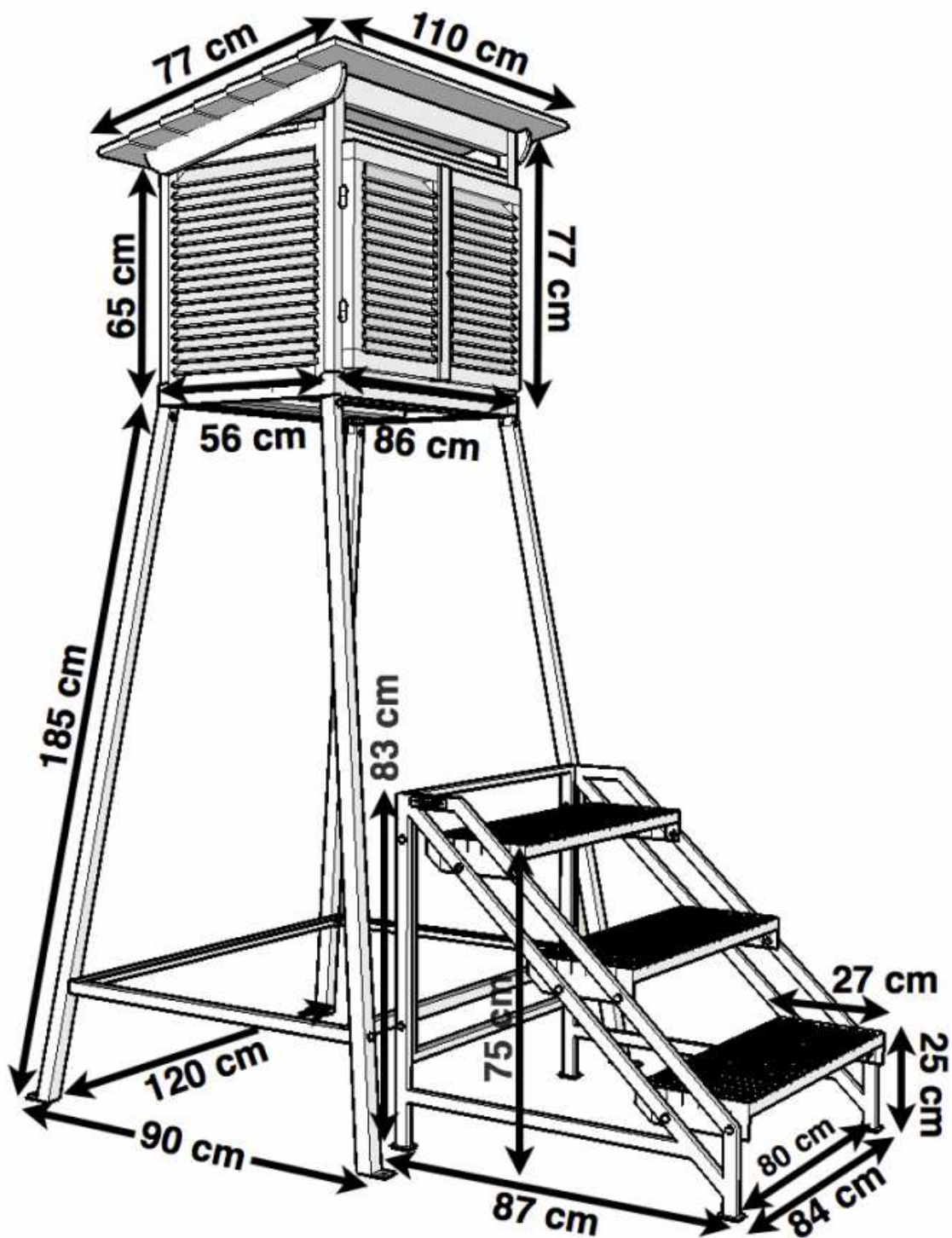
The large Stevenson screen is constructed in accordance with the WMO recommendations. The walls of the screen are double-louvred and the floor is made of staggered boards. The roof of the screen is doublelayered, with provisions for ventilation of the space between the two layers. Stand height is about 185 cm, which allows to make measurements at a height of 200 cm above the ground level. The screen is made of from dried pinewood, that has been protected against the harsh weather conditions, fungi and insects by impregnation, followed by application of layers of white oil (alkyd) paint. The entire construction is made with high precision to eliminate the problem of getting to the inside of direct sunlight. The set includes metal stand and steps, which are protected against corrosion by professional, resistant to mechanical damage, acrylic paint, forming a flexible coating. The steps are non-slip even in wintertime conditions.



### Construction details

- double-louvred walls - passively ventilated
- two-level floor - passively ventilated
- double-layered roof - passively ventilated
- wooden roof (overlapping pine boards)
- simple, handle-type lock - pull-off handle
- stand and steps delivered in parts
- non-slip steps (WEMA - steel grating)

	Dimensions	Materials
<b>Screen:</b>	<ul style="list-style-type: none"><li>• inter.: 75 x 50 x 50 cm</li><li>• exter.: 86 x 77 x 56 cm</li><li>• roof: 110 x 77 cm</li></ul>	<ul style="list-style-type: none"><li>• dried pine wood, 1 class - free of knots</li><li>• preserved by light organic solvent (LOSP) (containing insecticide and fungicide)</li><li>• coated with white oil paint (alkyd coatings)</li></ul>
<b>Stand:</b>	<ul style="list-style-type: none"><li>• height: 180 cm</li><li>• screen bed: 87 x 57 cm</li><li>• leg spacing: 120 x 90 cm</li></ul>	<ul style="list-style-type: none"><li>• metal (steel) profile (HSS): 40 x 40 x 2 mm</li><li>• metal (steel) angle: 30 x 30 x 2 mm</li><li>• coated with white, anticorrosive, styrene-acrylic paint</li></ul>
<b>Steps:</b>	<ul style="list-style-type: none"><li>• height: 83 cm</li><li>• length: 87 cm</li><li>• width: 84 cm</li><li>• step height: 25 cm</li><li>• step width: 27 cm</li><li>• step length: 80 cm</li></ul>	<ul style="list-style-type: none"><li>• metal (steel) profile (HSS): 20 x 30 x 2 mm</li><li>• coated with white, anticorrosive, styrene-acrylic paint</li><li>• non-slip WEMA steps (galvanized steel grating)</li></ul>



**Option:**

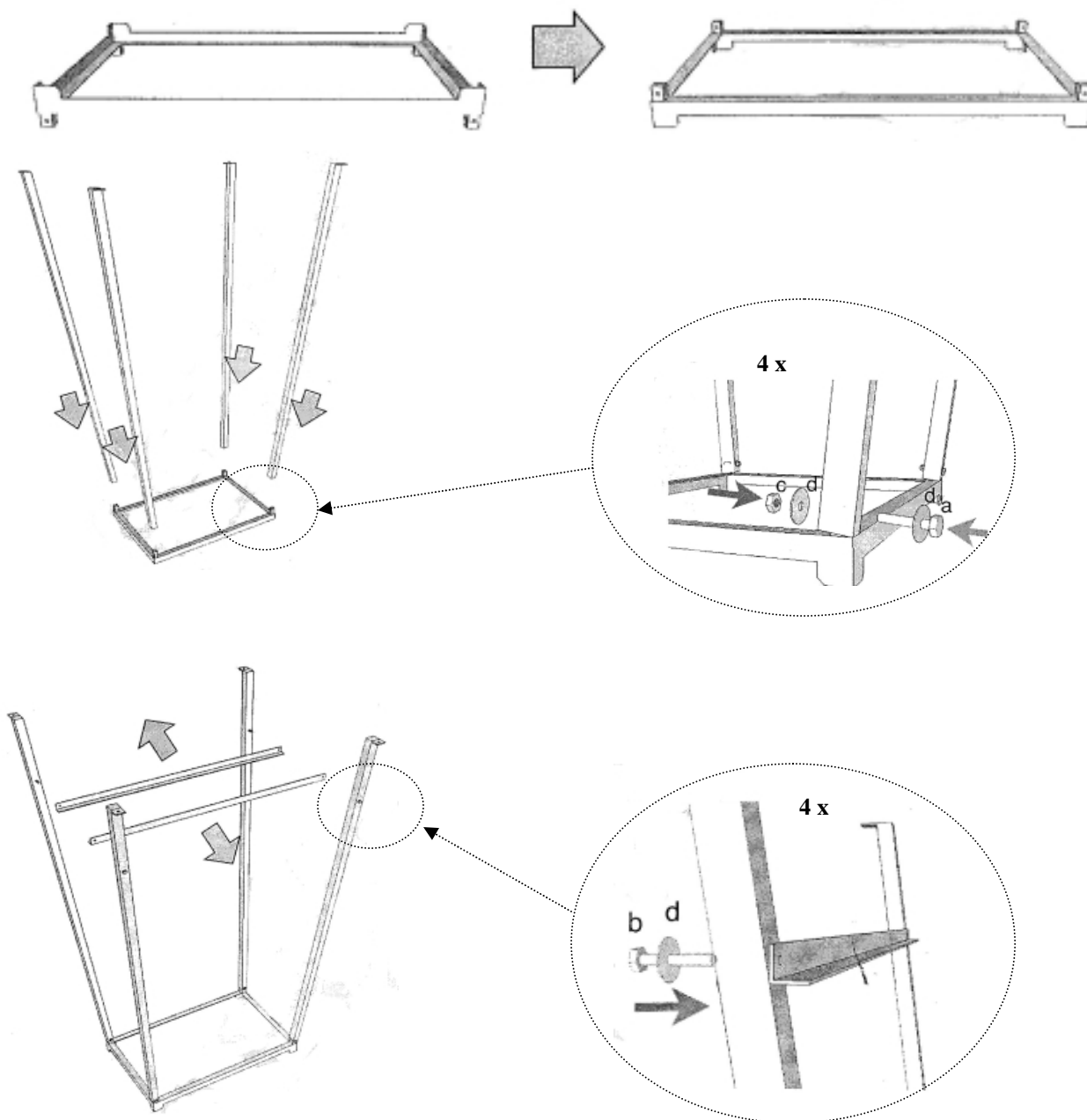
- concrete anchors - quick installation of foundation  
(installation possible in any weather conditions)

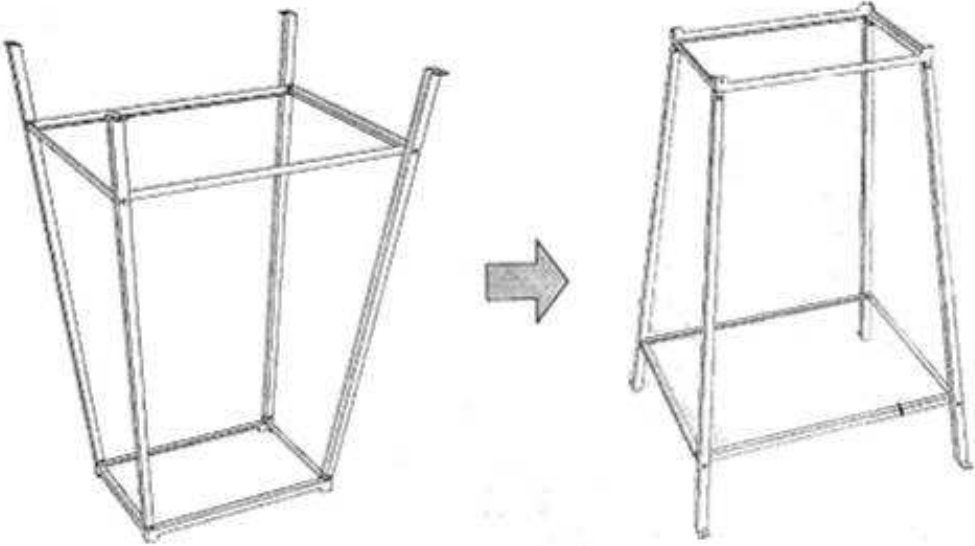
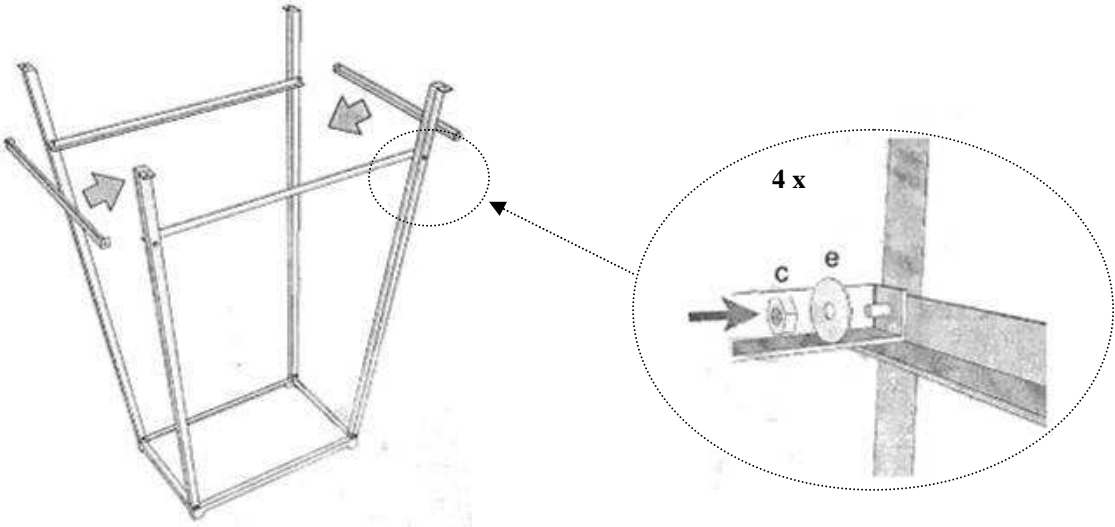
**Assembly:**

**Step 1: assembly of the stand:**

List of connection parts:

- a) 4 pcs. bolt M8 x 50mm
- b) 4 pcs. bolt M8 x 60mm
- c) 8 pcs. nut M8
- d) 12 pcs. wahser M8 (big version)
- e) 4 pcs. wahser M8 (small version)

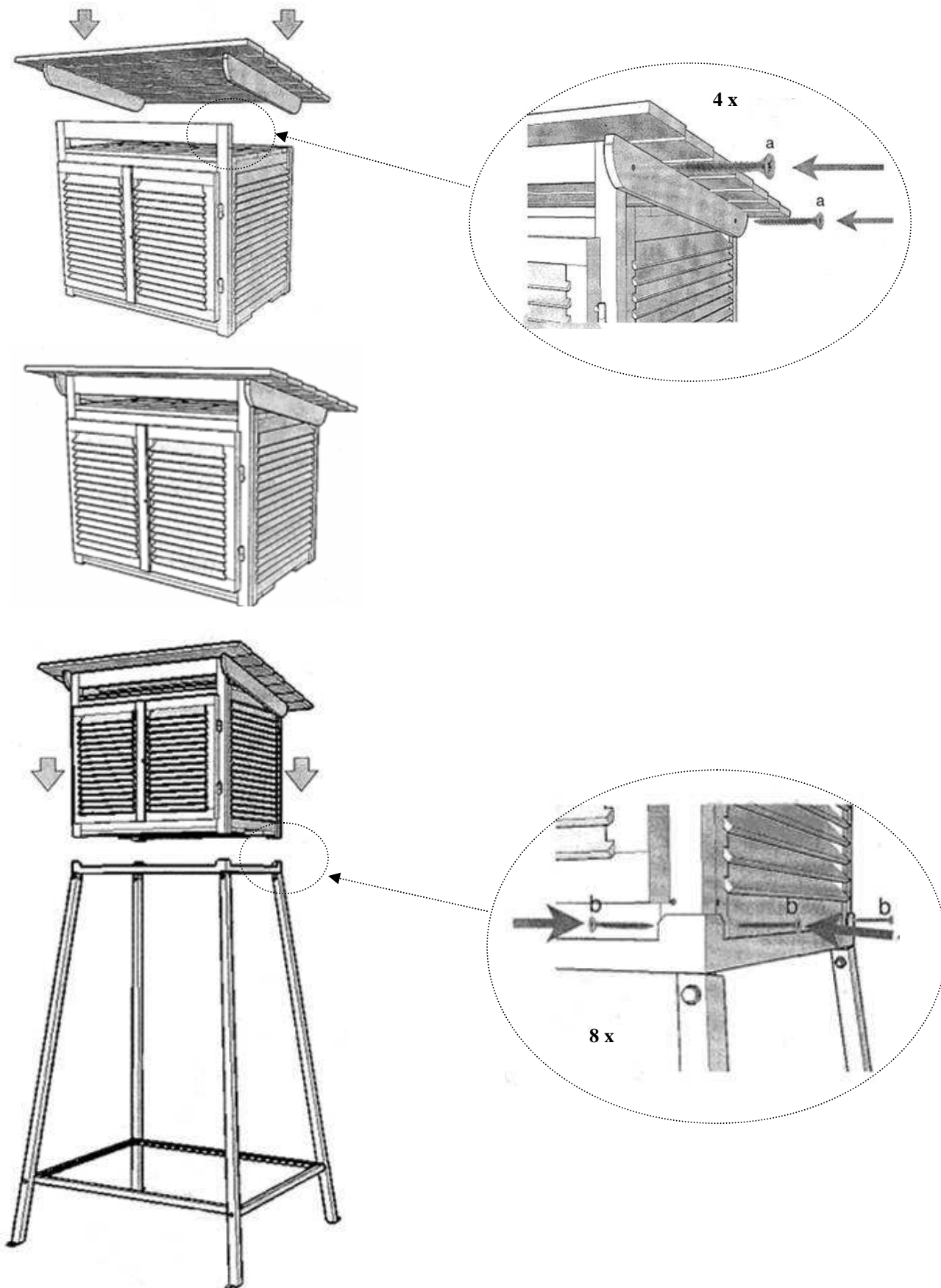




**Step 2: assamly of the screen and mounting on stand:**

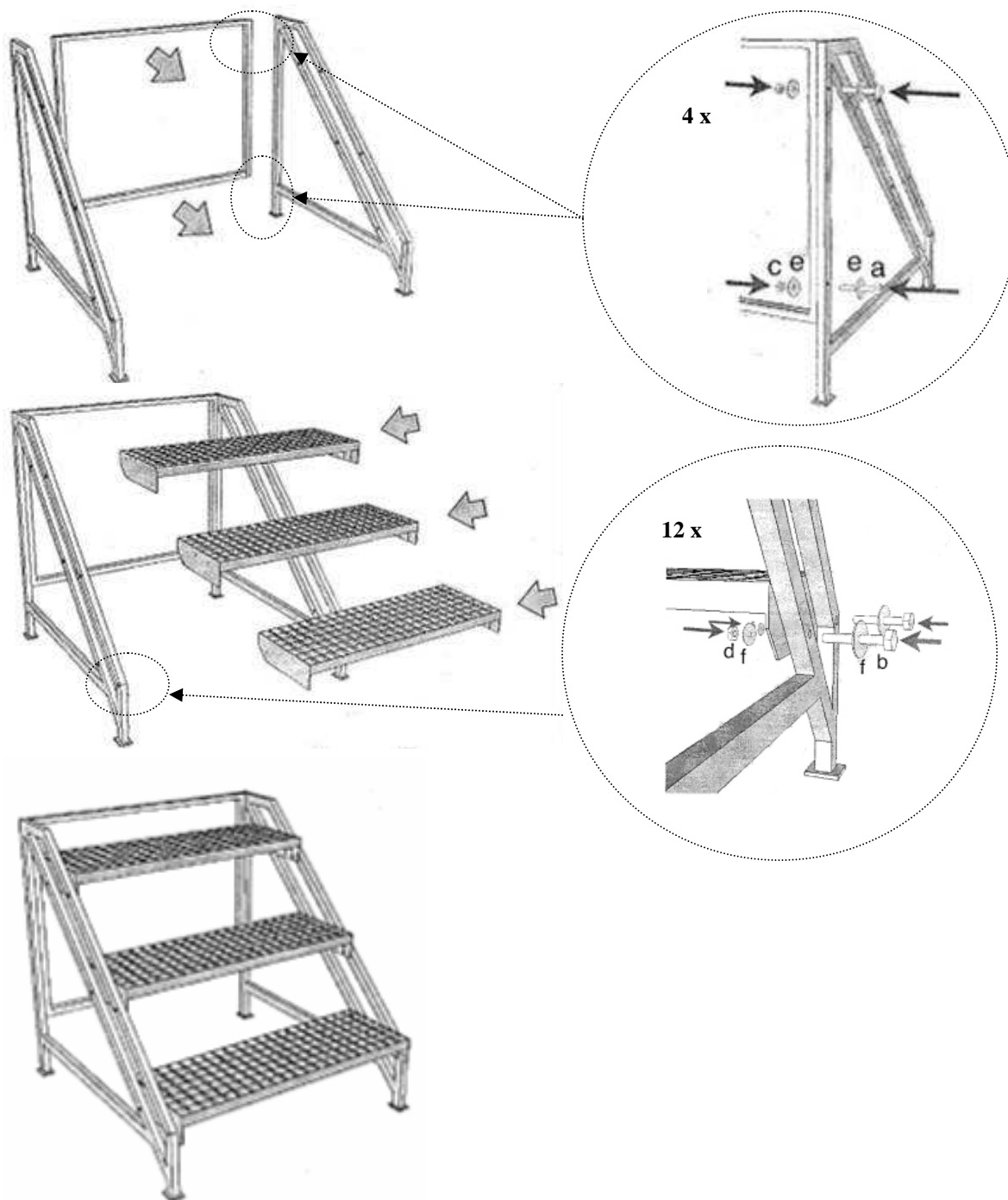
List of connection parts:

- a) 4 pcs. screw 4 x 40 mm
- b) 8 pcs. screw 4 x 40 mm



**Step 3: assembly of the steps:**

- a) 4 pcs. bolt M8 x 60mm
- b) 12 pcs. bolt M10 x 40mm
- c) 4 pcs. nut M8
- d) 12 pcs. nut M10
- e) 8 pcs. wahser M8
- f) 12 pcs. wahser M10



**DR. ALFRED MÜLLER**  
**METEOROLOGISCHE INSTRUMENTE KG**  
Chausseestraße 39 / 42c  
D-15712 Königs Wusterhausen

**Tel.:** +49 3375 9025-32  
**Fax:** +49 3375 9025-36  
**e-mail:** dr.a.mueller-r.fuess@t-online.de  
**www.rfuess-mueller.de**